



## ENTOCAM TECHNICAL SPECIFICATIONS



VERSION 1.1

2025.04.15

OUTREACH ROBOTICS

[INFO@OUTREACHROBOTICS.COM](mailto:INFO@OUTREACHROBOTICS.COM)

3000 BLVD DE L'UNIVERSITÉ | SHERBROOKE | QUEBEC | CANADA, J1K 0A5

---

## ENTOCAM AUTONOMOUS CAMERA TRAP FOR INSECT

### CAMERA

CAMERA WEIGHT	403 g
CAMERA DIMENSIONS	162 mm X 133 mm X 67 mm
TOTAL WEIGHT (with SCREEN SETUP)	547 g
SCREEN AREA	520 mm X 320 mm
SCREEN MATERIAL	600x300 Denier PVC-Coated Polyester Fabric
DISTANCE FROM LENS	42 cm (standard)
PHOTO AREA	450 mm x 250 mm
PHOTO OUTPUT FORMATS	JPG
CAMERA SENSOR	SONY Starvis
DEPTH OF FOCUS	+/- 50 mm
FLASH	36pcs White flash LEDs, 100 Ft range
FLASH BLUR	Transmittance 71%, Fog degree 90%
PHOTO RESOLUTIONS	64 MP, 48 MP, 32MP, 16 MP, 8 MP, 4 MP
CAMERA FOV	70°
TRIGGER TIME	Approx. 0.1~0.5 seconds
INPUT POWER	12V DC Max 3A
INPUT CONNECTOR	5.5 mm Barrel
OUTPUT FOR UV LIGHT	12V DC Max 3A
OUTPUT CONNECTOR	M8 Barrel Screw Connector
SUPPORTED MEMORY CARD	MicroSD card up to 512G (U1 or above)
MATERIALS	Carbon fiber composites, Carbon fiber reinforced Nylon 3D printing, 18-8 Stainless Steel fasteners
OPERATING TEMP.	-20 °C to 60 °C
IP RATING	IP66

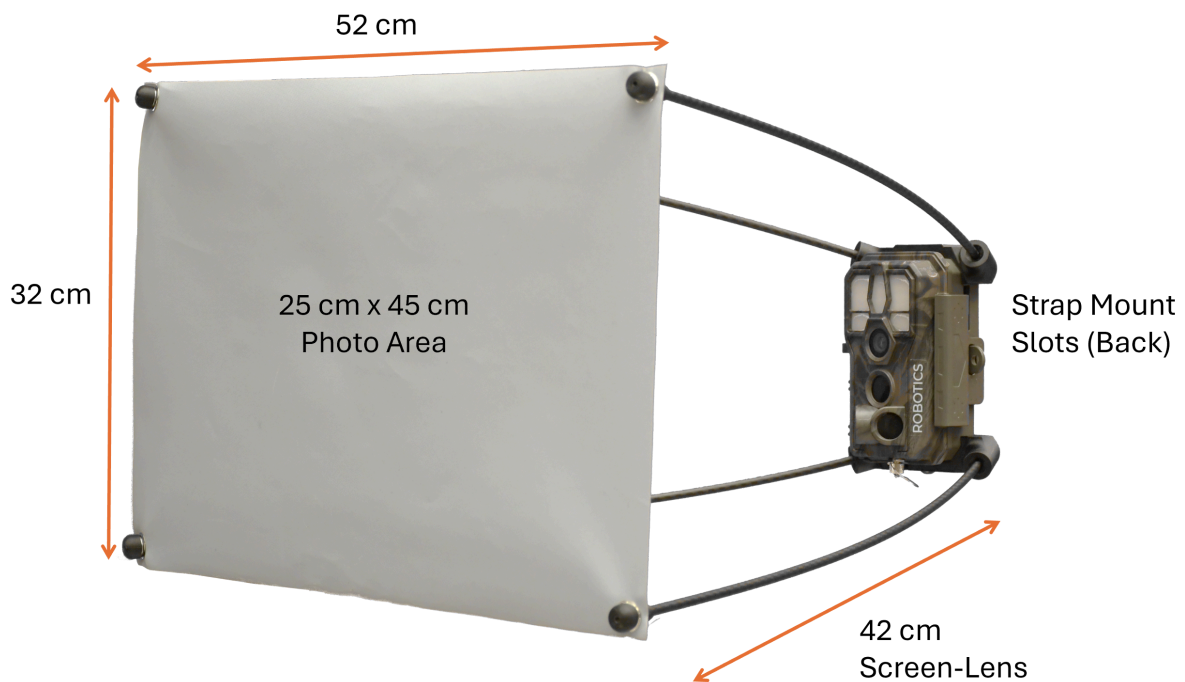
### OPERATION MODES

TIMELAPSE	Intervals programmable from 00:00:03 to 23:59:59
OPERATION HOURS	2 programmable periods
INFO STRIP (OPTIONNAL)	Date, Time, Temperature & Moon phase
USER INTERFACE	Built-in 2.4-inch color screen and operation buttons

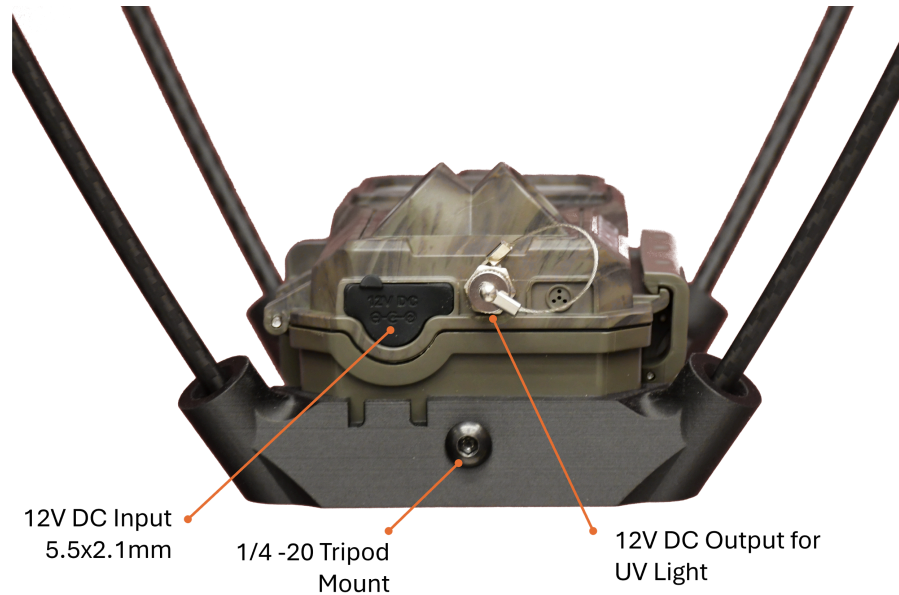
### INCLUDED IN THE STANDARD PACKAGE

- 1 x Custom GardePro Camera 8MP
- 1 x PVC-Coated Polyester Light-Grey Screen
- 4 x Carbon rods for 42 cm lens-screen
- 1 x Tree trunk mounting strap
- 1 x LepiLED Hanger
- 1 x 12v Screw barrel to USB-A female cable (2 ft)
- 1 x 12V Power Adapter with 5.5mm barrel connector
- 1 x 5.5mm barrel connector with bare end

### SYSTEM OVERVIEW







## BATTERY AUTONOMY ANALYSIS

	4 W (LepiLED Mini)	8 W (LepiLED Maxi)	13W (LepiLED Maxi)
<b>4 hours / 24 hours Operating Time</b>			
12V 8.3 Ah (Travel Battery)	6.1 days	3.1 days	1.9 days
12V 100 Ah (Car battery)	73.2 days	37.0 days	22.9 days
<b>6 hours / 24 hours Operating time</b>			
12V 8.3 Ah (Travel Battery)	4.0 days	2.0 days	1.3 days
12V 100 Ah (Car battery)	48.8 days	24.7 days	15.3 days
<b>8 hours / 24 hours Operating Time</b>			
12V 8.3 Ah (Travel Battery)	3.0 days	1.5 days	1.0 days
12V 100 Ah (Car battery)	36.6 days	18.5 days	11.5 days
<b>10 hours / 24 hours Operating Time</b>			
12V 8.3 Ah (Travel Battery)	2.4 days	1.2 days	0.8 days
12V 100 Ah (Car battery)	29.3 days	14.8 days	9.2 days
<b>12 hours / 24 hours Operating Time</b>			
12V 8.3 Ah (Travel Battery)	2.0 days	1.0 days	0.6 days
12V 100 Ah (Car battery)	24.4 days	12.3 days	7.6 days